

November 2019

VMR Whitsunday – Key Facts

VMR Whitsunday

- VMRW has the only ocean-going rescue vessels in the Whitsundays and covers an area 13,000 Sq Km, from Gloucester Island in the North West, to Cape Conway/Shaw Island in the South (as shown on the map below). Coverage boundaries to the East depend on consideration of tides, weather, VMR vessel range and size of the assisted vessel, if a tow is likely. There are many reefs, currents, and often rough seas due to wind against tide.
- The Whitsundays has the highest ratio of boat ownership in Australia, about 16%.
- VMRW was the first VMR in Queensland and VMR1 was the first vessel.
- Manned totally by approx. 50 Volunteers and has approx. 1000 financial members. No paid employees.
- Volunteers – boat crew, phones, radio room, fundraising, maintenance, documentation.
- 120 Activations per year – assists, Search and Rescue, Medivacs, increased by 40% in 2018.
- A trend to more activations further afield, outer reef can be 8-12 hour activation.
- VMRW has replaced VHF marine radio repeaters for channels 81 and 82 following Cyclone Debbie, complete with improved independent solar and wind generation. Recently installed AIS receivers at these locations

VMR1 (sponsored by Coral Sea Marina)

- NoosaCat 4400 FB PATROL just under 12 metres long, 4.5 metres across the beam, only draws 1.2 metres
- Powered by twin Cummins diesel engines delivering a combined 960 horsepower. Configured for long distances and towing vessels.
- Purpose built as an offshore flybridge rescue vessel– a must for visibility near the reefs in the Whitsundays. Fitted with Forward Looking Sonar.
- Fuel capacity of 1600 litres (range of 300 nm's), which gives plenty of safety margin for long tows.
- Walk-around deck footprint provides safer handling in the rough seas we can encounter in the Whitsundays and a safer working environment for our Volunteer crews and offering more efficient access.
- State-of-the-art Furuno electronics with touch screen technology, Forward Looking Infrared Camera (which can pick up a person in the water up to 900 metres) and VHF Radio Direction Finder.
- Engines below deck - provides a spacious working area. Engine wells have automatic fire protection.
- Cabin and deck layout is designed for Medivacs and stretcher handling. Carries a QAS Stryker stretcher.
- Vessel has its own life raft and a Life Cell for flares and emergency equipment
- In the cabin – air conditioning, toilet and shower (good for hyperthermia recovery) more spacious working area, kitchenette with microwave, fridge and coffee maker for long distance activations. It is air conditioned for the comfort of crew, emergency personnel, and any passengers that we are assisting.

VMR2 (sponsored by Emerald Sea Surveys)

- 6.7m Naiad Patrol Vessel Centre Console, 2.5m across the beam, only draws 0.5m, 2.5t displacement.
- Powered by economical twin F130 Yamaha outboards capable of cruising at 25kts at 3,400 rpm.
- Specifically designed and purpose built as a rescue vessel with a fold out, step down front, for beach landings – very useful in the shallow bays and fringing reefs in the Whitsundays.
- Fitted with state-of-the-art Furuno electronics, radar and AIS with touch screen technology, same as VMR1.
- Equipped with life ring, harness type life jackets, safety kit and medical kit.
- Will be housed on a dry dock and with a trailer for deployment elsewhere.



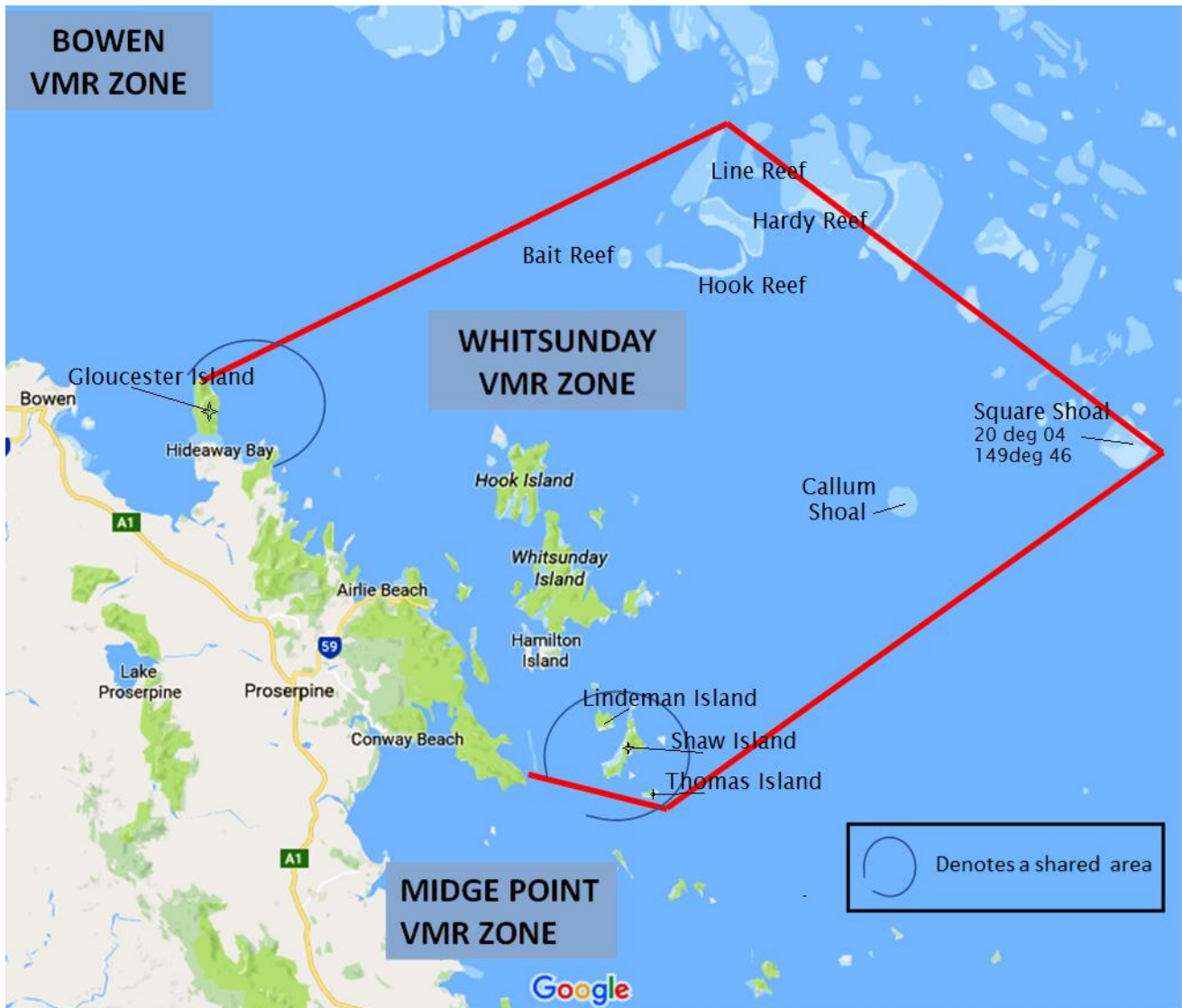
**MARINE
RESCUE**

VOLUNTEER MARINE RESCUE WHITSUNDAY Inc

PO Box 298, Cannonvale, Qld 4802
Email: info@vmrwhitsundays.com.au
Call sign: VMR442, channels 16, 67, 81, 82

Phone: (07) 4946 7207
Web: www.vmrwhitsundays.com.au
ABN: 61 265 910 328

OUR AREA OF COVERAGE



Volunteers saving lives